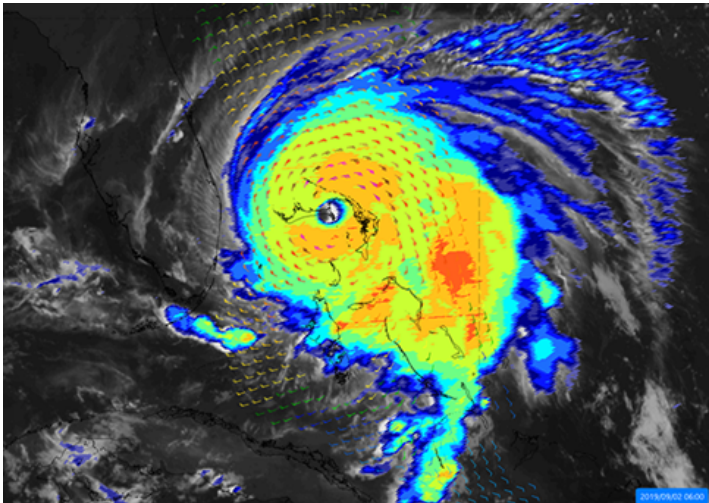


# Monitor and Forecast Weather Events

[Download Product Sheet](#)



Hurricane Dorian, September 2019 (Source: EUMETSAT 2020)

## Category

<input checked="" type="checkbox"/> Product Development	<input type="checkbox"/> Product Sales	<input checked="" type="checkbox"/> Underwriting	<input checked="" type="checkbox"/> Loss Adjustment	<input type="checkbox"/> Claims Handling
---	--	--	---	--

## PRODUCT DESCRIPTION

The monitoring and forecasting of weather events is important for agricultural business processes to take appropriate measures already in advance and for agro-insurance to correlate damages to certain risk events. Weather observations and forecasts are based on a continuous, global EO data on the weather events in Earth's atmosphere and on surface. Observations made by special weather satellites are an important source for this application in agricultural insurance and crop monitoring.

Two types of weather satellites are currently in operation, the geostationary and the polar orbiting satellites. To get the best results, a combination of both sources is ideal. Satellites with a geostationary orbit appear stationary when viewed from the earth, meaning they have the same rotation period as the Earth. They are located further away from the surface; therefore, the spatial resolution is lower; however, they provide a higher temporal resolution than polar orbiting satellites. The Meteosat Second Generation for example provides a baseline repeat cycle of 15 minutes. On the other hand, with each revolution polar / sun-synchronous / Lower Earth orbit satellites pass both poles while they pass the equator at a different longitude each time. Forecasts usually range from a few hours until 10 days ahead being a good tool for insurance portfolio monitoring and application of non-insurance measures by farmers to decrease the potential negative effects of the forecasted event on their crop yields.

## PRODUCT SPECIFICATIONS

### Main processing steps

Information are derived from geostationary and polar orbiting satellites.

### Input data sources

Geostationary satellites: Meteosat-8/-9/-10/-11, GOES

Polar orbiting satellites: Metop-A/-B/-C

Other satellites: Sentinel-3A/-3B, Jason-3

Supporting data: n.a.

### Spatial resolution and coverage

Spatial resolution: > 1 km

Coverage: global

Availability: globally available

### Accuracy / constraints

Thematic accuracy: > 85 %

Spatial accuracy: Different data sources are combined to reach the highest accuracy possible. Higher resolution does NOT mean higher accuracy necessarily. It mainly means more spatial detail. This is especially true for precipitation accuracy, which might decline at higher resolution (below 5 km), see e.g. <https://content.meteoblue.com/nl/specifications/data-sources>.

For a detailed analysis of weather forecasts, please refer e.g. to the evaluation of ECMWF forecasts: <https://www.ecmwf.int/node/19277>.

### Limitations

Weather predictions limited to 10 days in future; severe weather event warnings available 48 hours to 15 minutes prior to a weather event.

## Frequency / timeliness

Frequency: depending on satellite

Timeliness: near real-time

## Delivery / output format

Data type: NetCDF

File format: NetCDF; typically available also in web interfaces

## Accessibility

Data is available through portals after registration, some products are subject to licence agreements., e.g. through the Copernicus Atmosphere Monitoring Service (<https://atmosphere.copernicus.eu/>).

Available on demand from commercial service providers.

## CHALLENGES ADDRESSED - USE CASE(S)

Product Development:

- [Index insurance: Platform for crop health products](#)
- Study relations between climatological events and crop production proxies at large scale

Product Sales:

- [Client Outreach](#)
- [Pre-contractual consulting](#) (show-case risk exposure)
- [Greater acceptance of index covers by farmers](#)
- [Risk alerts](#)

Underwriting:

- [Weather forecast tool](#)

Loss Adjustment:

- [Increase credibility of loss adjustment](#) (e.g. show pictures to support loss adjustment communication to farmer)
- [Enhance field survey](#) (better precision with EO data support)