

# Satellite based vessel detection

## Satellite Based Vessel Detection

*Earth Observation Support to Maritime Surveillance and Monitoring*

**Users:** Coast Guard, Coastal authorities.

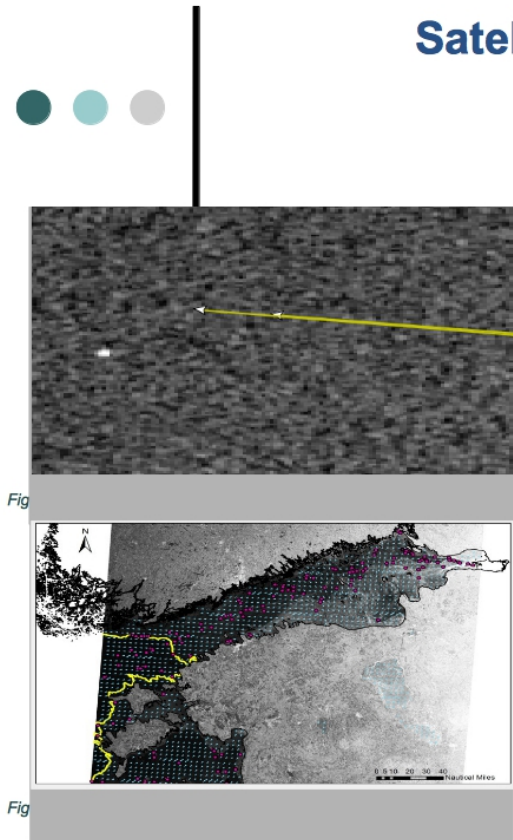
**Need:** Near real-time (<1 hour) detection, identification and reporting of vessels.

**Challenge:** Fast and regular access to satellite and supporting data. Reliable detection of targets at sea as vessels.

**Initiative:** Satellite images and supporting data (AIS) used to detect and identify vessels. Correlation to identify unknown suspicious vessels. Input to integrated maritime picture. ESA and EU support to establish extended operational use.

**Results:** Service operational in Norway for more than 10 years. Operational expansion, based on national experiences. Optimise tactical use of other surveillance resources (vessels, aircraft).

**Service provider:** Kongsberg Satellite Services (KSAT), Norway ([www.ksat.no](http://www.ksat.no))



Fig

Fig

**EARSC**

European Association  
of Remote Sensing  
Companies

In Brief Stories – Best practises of data utilization