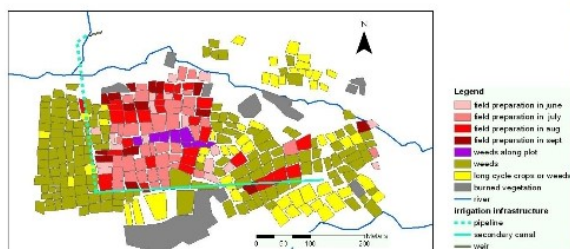


Implementing & managing agriculture projects

Earth Observation Support to Agriculture and Rural Development



•**Users:** Ministry Agriculture Malawi

•**Need:** Develop a sustainable irrigation plan and environmental impact assessments

•**Challenge:** Preparation for an irrigation plan to avoid erosion and reduced transport capacity of the water flow

•**Initiative:** Very high resolution images on irrigation sites used to make a detailed map outlining the irrigation scheme (timing of cultivation steps & greenness of the crops) providing a good inventory of the infrastructure. Information was derived by visual interpretation, image classification, analysis of NDVI-temporal profile

•**Results:** Land cover maps facilitate the selection of new irrigation sites, or the impact assessment of existing schemes helping to target field visits or to make the management of very large schemes more efficient

•**Service provider:** VITO (www.vito.be)