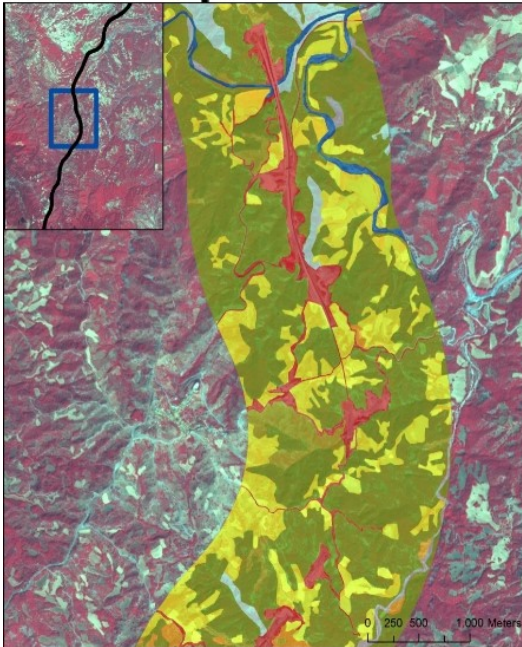


# Environmental impact of road construction

*Integration of Satellite EO Technology in Infrastructures*



- Users:** European Investment Bank
- Need:** Assess the environmental impact of the project as well as new, improved information for the creation of a new baseline and a more precise analysis of future changes
- Challenge:** Road alignment meeting all the environmental demands, as well as to reducing the impacts on the brown bear habitat
- Initiative:** Land cover maps were used for the calculation of different landscape fragmentation indicators to assess the impact of road during and after the end of its construction on the surrounding habitats.
- Results:** monitoring the progress of the construction work. Perform synoptic and periodic progress monitoring of large construction projects and its environmental impact. Contribution to a fast and cost-efficient monitoring strategy
- Service provider:** Geoville ([www.geoville.com](http://www.geoville.com))