

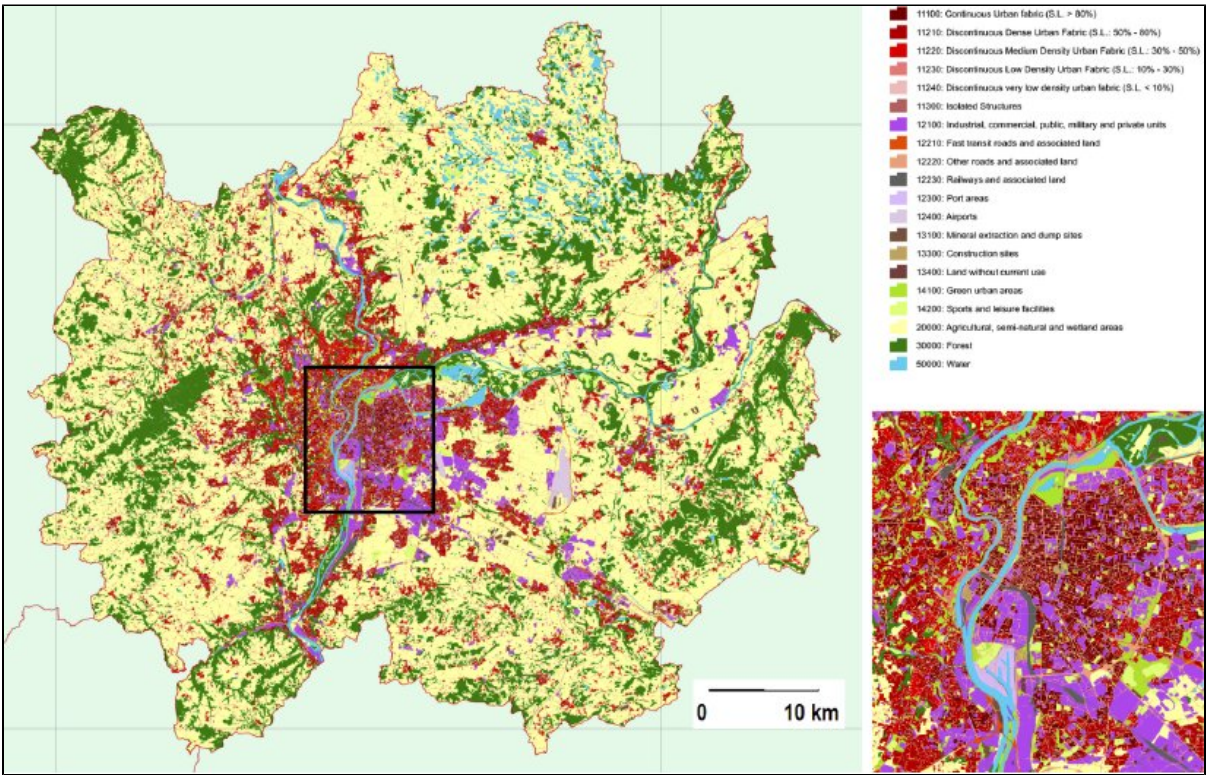
Monitor urban areas

Applications

GMES Urban Atlas

An operational example of consistent and large-scale urban monitoring effort is the GMES Urban Atlas, a GMES project funded by the European Commission (DG REGIO) presently providing reliable and inter-comparable detailed and cost-effective land use maps for 305 EU Large Urban Zones with more than 100000 inhabitants. It comprises 22 thematic classes, with a MMU of 0.25 ha for the urban areas and 1.00 ha for other surrounding areas. Because the Urban Atlas classifies urban functional zones, i.e. the dominant use of city blocks, it opens the way for fruitful inter-city comparisons on factors such as industrial or residential density, green areas, and urban sprawl.

Future editions of Urban Atlas are planned every three to five years, communicating on the evolution of cities. Maps, GIS data and metadata reports can be downloaded for each covered area at www.eea.europa.eu/data-and-maps/data/urban-atlas



Urban mapping example for the city of Lyon, France. Credits: Urban Atlas

References:

ESA 2013, Earth Observation for Green Growth: An overview of European and Canadian Industrial Capability

Products

Products	Ext. Source	Descriptions	Product Standards	Ref. Project
urban atlas (info about: land use maps, urban green space, land uptake...)		urban planning and management: management urban areas (use Very High Resolution data for a sample of large urban zones)		geoland2 , geoland2

Success Stories

References

References

Topic	Description	Keywords	Reference