

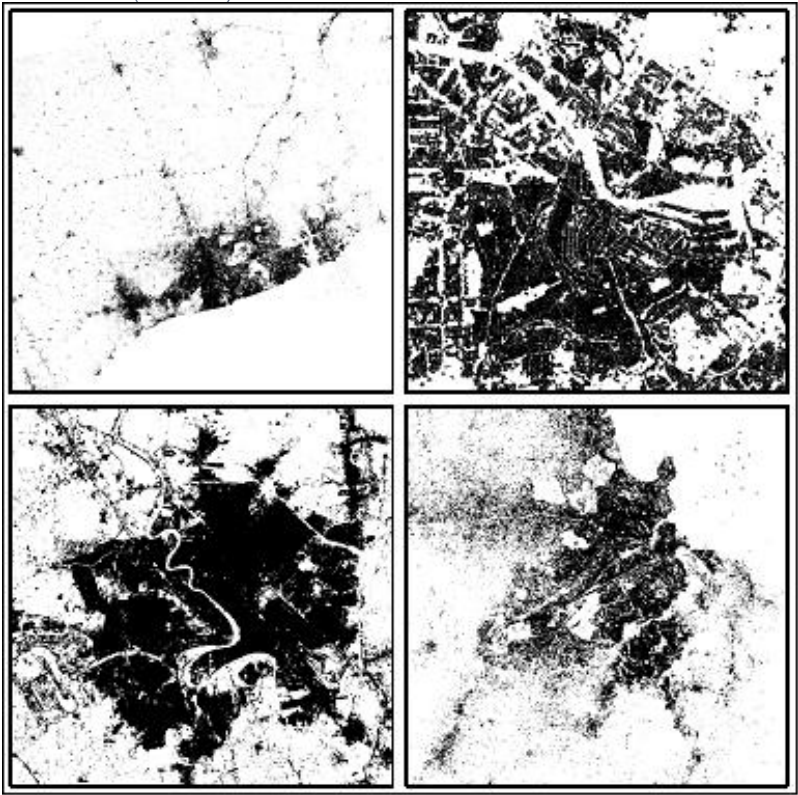
Monitor construction and buildings

Applications

Global Urban Footprint

The Global Urban Footprint (GUF) is a dataset produced by DFD-DLR (German Remote Sensing Data Center of the German Aerospace Center). The fully-automated processing system detects and extracts built-up areas from very high resolution radar satellite imagery. The result is a global binary settlement mask that outlines urban and non-urban areas at the unprecedented spatial resolution of approximately 12 m. A public domain version of it will be made available at the resolution of 50–75 m. With its global coverage and the enormous spatial detail, this initiative represents a promising contribution to global analyses of urban and peri-urban areas.

Details of the DLR Global Urban Footprint product for: Accra (Ghana), Amsterdam (Netherlands), Baghdad (Iraq) and Dar es Salaam (Tanzania). Credits: M. Marconcini (DFD-DLR).



References:

ESA 2013, Earth Observation for Green Growth: An overview of European and Canadian Industrial Capability

Products

Products	Ext. Source	Descriptions	Product Standards	Ref. Project
<ul style="list-style-type: none">land usetopographic mapsthermal imaging maps		<p>urban energy efficiency (measurements of energy usage and loss in particular urban situations)</p> <ul style="list-style-type: none">building type information (size type of construction... & efficiency scores)building outlines and property registry information		

land use water quality		ports and harbour management		
---------------------------	--	------------------------------	--	--

Success Stories

Success Stories

References

References

Topic	Description	Keywords	Reference