

# EO services contributing to SDGs

## Onshore wind site selection

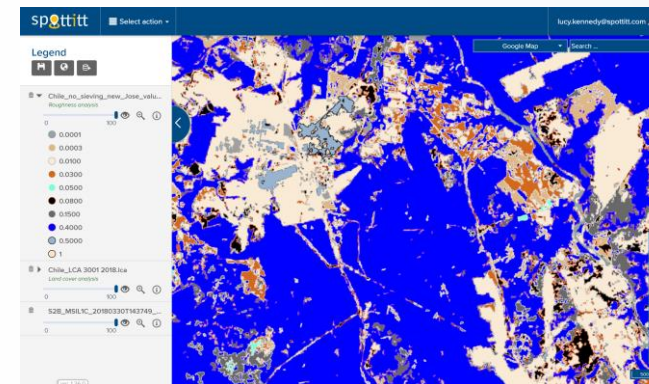
spottitt

7 AFFORDABLE AND CLEAN ENERGY

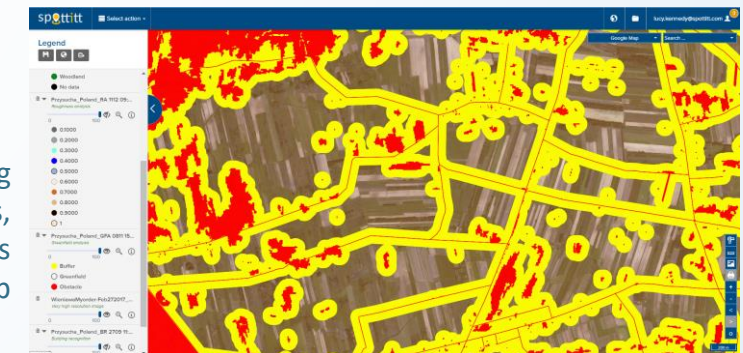


- User: Onshore wind developers, energy intensive industries
- Challenge/Needs: Remote discovery and scouting of small and large scale sites with suitable geography for onshore wind development all over the world.
- Initiative: Developed as part of ESA Business Applications funded SEWISS project which developed a range of site selection tools for renewable energy developers.
- Results: Commercially available service which provides land cover and land roughness, building recognition, site and turbine selection analyses derived from a selection of open source and commercial optical imagery. Global coverage. Automated service request/delivery. Pay as you Go or subscription options. [Service details](#). Used by international clients who have remotely studied sites all over the world.
- Service Provider: Spottitt Ltd.

Target 7.1: By 2030, ensure universal access to affordable, reliable and modern energy services.



Land roughness for wind simulation input



Site selection avoiding trees, roads, buildings, national parks, railways and land with a steep incline

EARSC

European Association  
of Remote Sensing  
Companies

<https://www.spottitt.com/about/spottitt-features/>