

EO services contributing to SDGs

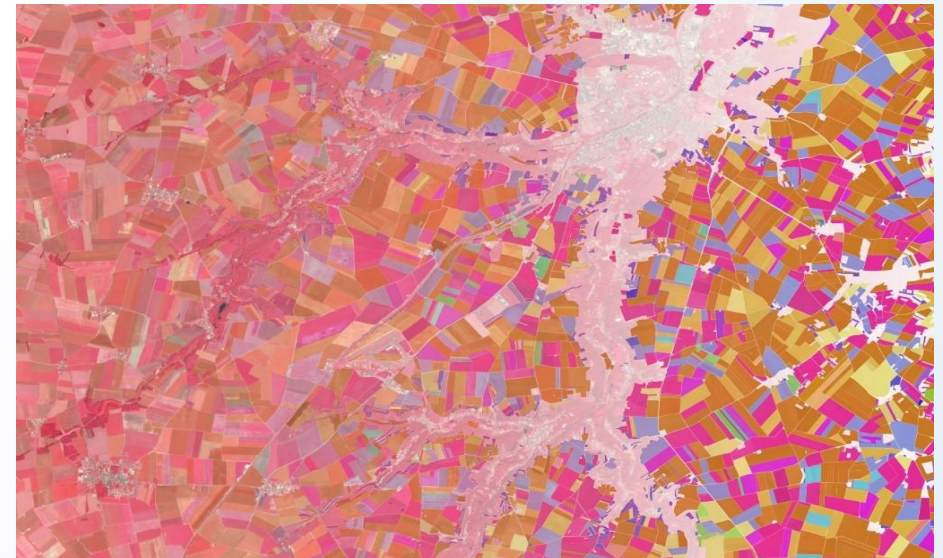
Water catchment assessment



- User: Eau de Paris (French water agency, 3 million users)
- Challenge/Needs: Systematic, automatized qualification of land cover to improve knowledge of agricultural practices on water catchment areas and assess their vulnerability to pollutant transfers.
- Initiative: Use of EO and deep-learning process for crop identification at farming plot scale, cover crop classification and crop rotation cycles.
- Results: Improvement of agricultural practices by farming partners through payment for environmental services programme.
- Service Provider: Kermap

Target 6.1: By 2030, achieve universal and equitable access to safe and affordable drinking water for all.

Target 6.6: By 2020, protect and restore water-related ecosystems, including mountains, forests, wetlands, rivers, aquifers and lakes.



Infrared crop classification on water catchment area in the Greater Paris region – ©Kermap