

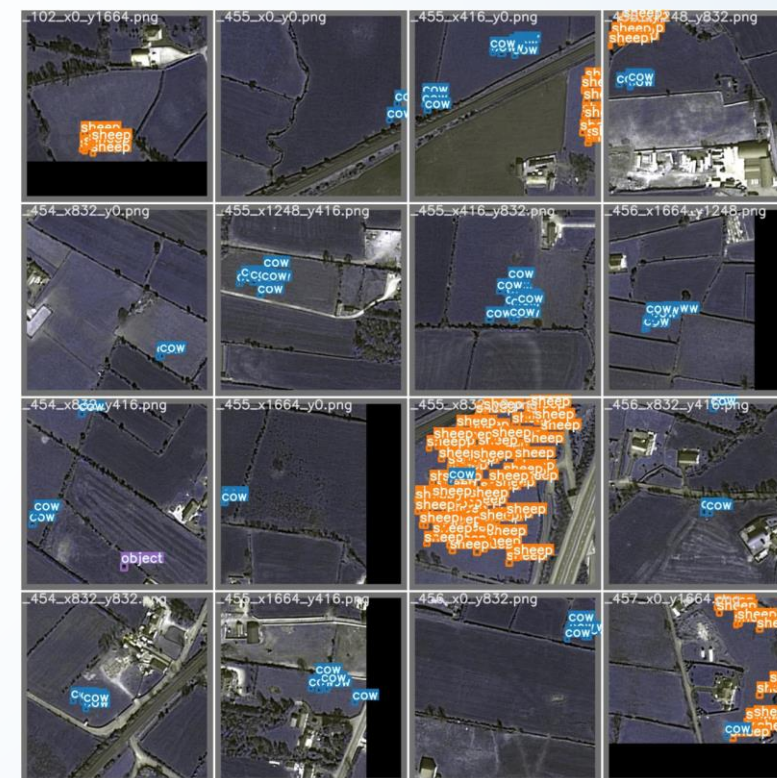
# EO services contributing to SDGs

## Livestock Monitoring



- **User:** Agricultural and environmental agencies
- **Challenge:** Using AI to monitor and track livestock. These algorithms are being trained across a range of satellite resolutions. This help to identify unsustainable agricultural expansion.
- **Initiative:** Being able to accurately differentiate between cattle and sheep at 0.5m, across a range of land covers, is breaking new ground in a lot of ways but is a real challenge.
- **Results:** This project is currently being implemented in Northern Ireland. According the Minister of Agriculture, Environment, and Rural Affairs Edwin Poots “Monitoring numbers and location of grazing cattle and sheep is essential for disease management purposes, and for validation of agricultural and environmental support schemes.” Benefits and future use cases for this work are endless. Example rang from: risk of animal death due to wildfires toto better control overgrazing of highland areas, encouraging regeneration of flora and grasslands.
- **Service Provider:** The Icon Group

Target 2.4: By 2030, ensure sustainable food production systems and implement resilient agricultural practices that increase productivity and production, that help maintain ecosystems, that strengthen capacity for adaptation to climate change, extreme weather, drought, flooding and other disasters and that progressively improve land and soil quality.



Identifying the difference between cow and sheep

EARSC

European Association  
of Remote Sensing  
Companies

<https://www.icon.ie/projects>