

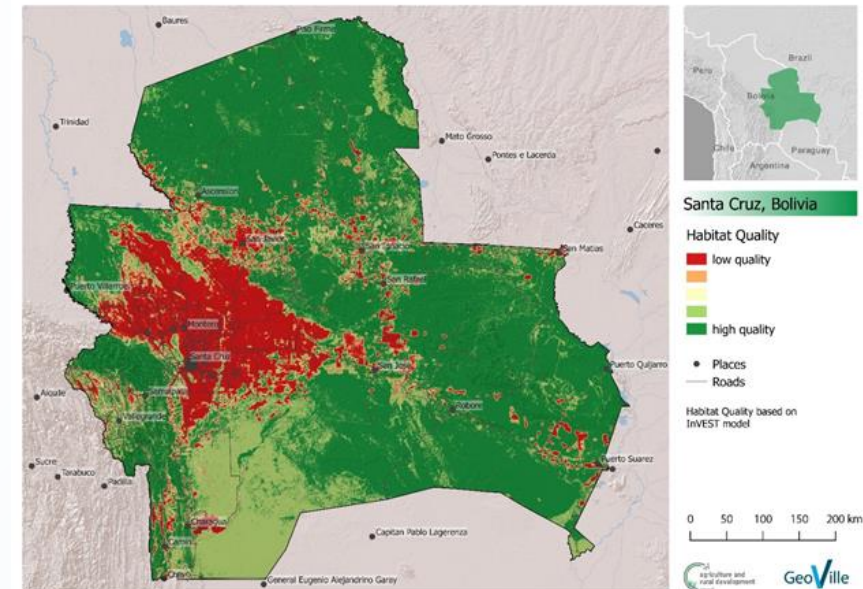
EO services contributing to the SDGs

Agricultural and Rural Area Monitoring



- **Users:** Multilateral Development Banks, Public authorities (urban & spatial planning), supranational institutions, NGOs, private sector
- **Challenge:** Sustainable Food Production and Resilient Agricultural Practices. Monitoring of the impact of cultivation on the environment using global Earth Observations
- **Initiative:** Continuous, high-resolution (20m or better) monitoring of cultivated areas, cropping patterns and productivity to measure performance of interventions for the agricultural sector
- **Results:** Global Monitoring of Agriculture and its Impact on the Environment in support of agricultural monitoring programmes of Multilateral Development Banks and the GEO Global Agricultural Monitoring Initiative (GEOGLAM)
- **Service provider:** GeoVille
- **References:** Earth Observation for Sustainable Development - Agriculture and Rural Development
<https://eo4society.esa.int/projects/eo4sd-agriculture/>

Target 2.4: By 2030, ensure sustainable food production systems and implement resilient agricultural practices that increase productivity and production, that help maintain ecosystems, that strengthen capacity for adaptation to climate change, extreme weather, drought, flooding and other disasters and that progressively improve land and soil quality



© Bolivia Habitat quality in intensively used agricultural areas; EO4SD Agriculture and Rural Development, European Space Agency; processing by GeoVille