

EO services contributing to SDGs

Conservation and restoration of peatlands

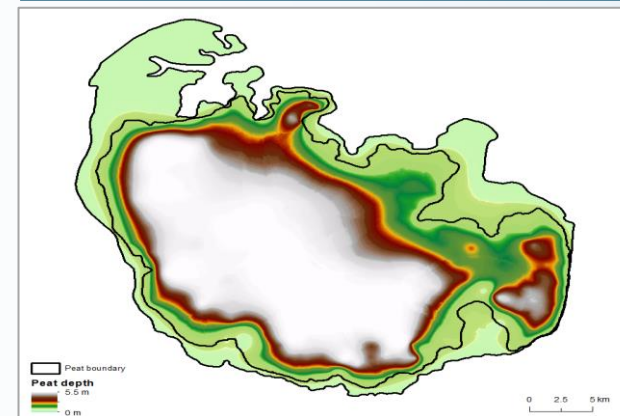
- User: Indonesian Peat Restoration Agency (BRG - Badan Restorasi Gambut)
- Challenge/Needs:
 - The location, extent and status of peatlands are often unknown.
 - Accurate peatland maps needed to support conservation and restoration efforts
 - Assess the carbon storage potential of peatlands for GHG emissions abatement plans
- Initiative: NICFI & UNOPS: Restoring Indonesian Peatlands
- Results:
 - Mapping the extent of 15 million hectares of peatland in Indonesia
 - Estimation of the peat thickness and volume & modeling fire hazard
 - Creation of an updated map of peatland extent based on peat surface topography (DTM) and current and historic multispectral satellite imagery
 - Mapping of drainage network and hydrological analysis, assessment of the number of necessary canal blocking locations for restoration
 - Impact: Data-driven decision support for large scale peatland restoration
- Service Provider: Remote Sensing Solutions GmbH



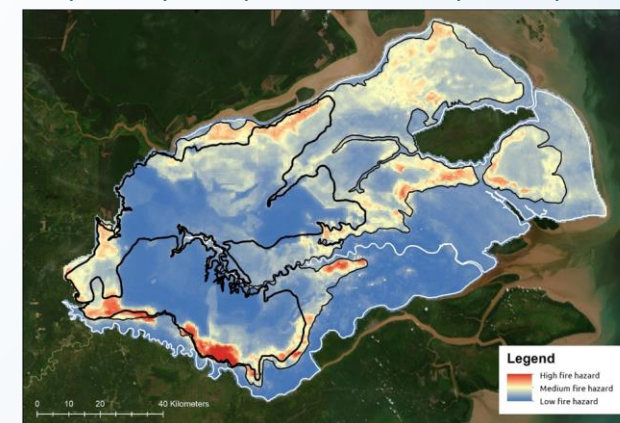
15 LIFE ON LAND



Target 15.1: By 2020, ensure the conservation, restoration and sustainable use of terrestrial and inland freshwater ecosystems and their services, in particular forests, wetlands, mountains and drylands, in line with obligations under international agreements.



Map example of peat extent and peat depth



Model for Peatland fire hazard, Sumatra, Indonesia.

Peat Prize: <https://www.packard.org/insights/news/indonesian-peat-prize-winner-announced-new-mapping-method-will-protect-carbon-rich-peatlands/References link>

