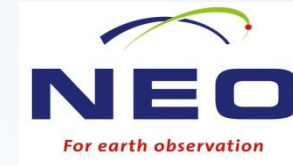


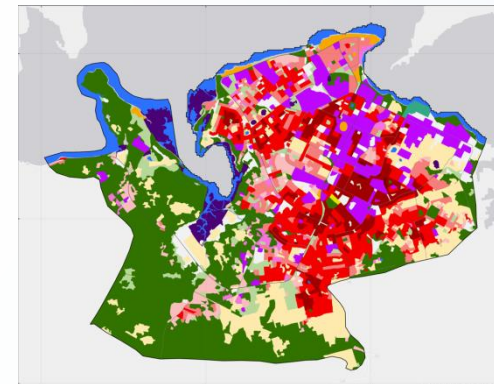
# EO services contributing to SDGs

## Land use land cover (change) mapping

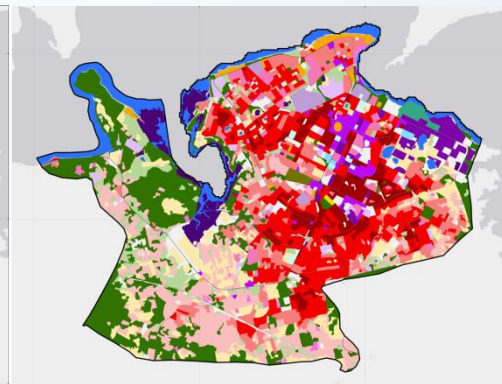


- User: land administration, forest management, city planning
- Challenge/Needs: monitoring the land use modification, identify land degradation, forest conservation
- Initiative: Earth Observation for Sustainable Development (EO4SD) – European Space Agency (ESA) program; Earth Observation for Sustainable Development (EO4SD) – European Space Agency (ESA) program, aims to achieve increasing the uptake of satellite based information in the financial institutions' regional and global development programmes with a focus on urban development, agriculture and rural development . It aims to meet the long term, strategic geospatial information needs in the individual developing countries as well as international and regional development organisations. The land use/land cover product represent a detailed status of spatial –temporal land use/land cover patterns on the level of individual cities or larger administrative areas.
- Results: 1) mapping land use land cover maps 2) derive the changes through the years 3) mapping the forest extent 4) detect illegal logging activities
- Impact: The high temporal resolution combined with low production costs allow the comparison of the capacity of specific locations relative to the projected demand arising from growth in populations and economic activities (World Bank, 2010) With such information urban planners can easily capture infrastructure bottlenecks and spatial structures important to be improved and prioritize activities and investments.
- Service Provider: NEO BV

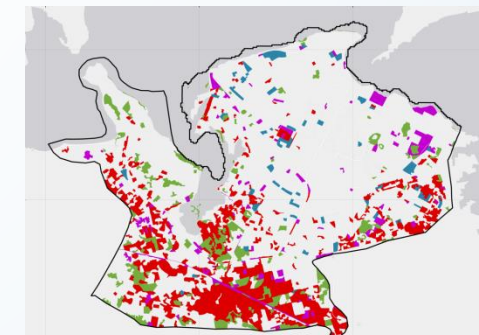
**Target 15.1: By 2020, ensure the conservation, restoration and sustainable use of terrestrial and inland freshwater ecosystems and their services, in particular forests, wetlands, mountains and drylands, in line with obligations under international agreements.**



Mtwara 2008 land use land cover



Mtwara 2017 land use land cover



Land use land cover change between 2008 and 2017

Neo environmental monitoring solutions:

<https://www.neo.nl/forest-and-tree-protection/>

<https://www.neo.nl/natural-vegetation-mapping-and-monitoring/>

<https://eo4sd-urban.info/>

**EARSC**

European Association  
of Remote Sensing  
Companies

