

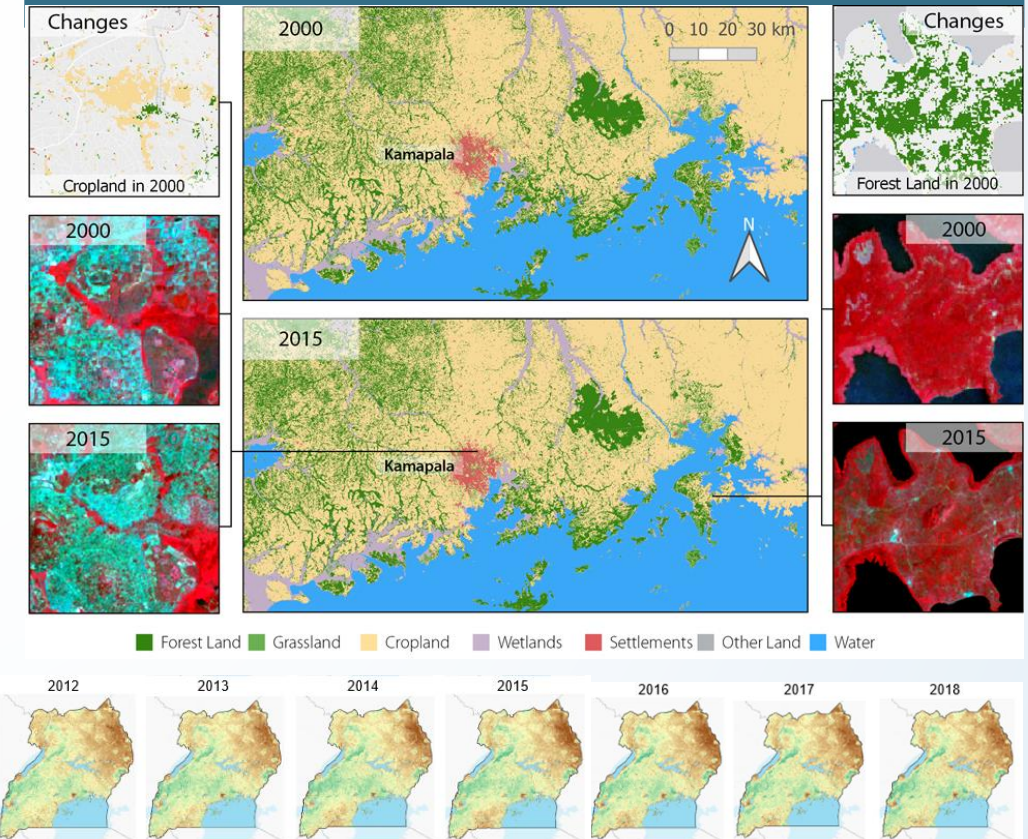
Land degradation mapping



- **Users:** Development Agencies, Governmental Org., IFIs
- **Challenge:** Entice governmental organizations to use EO derived data to fight critical reduction or loss of the biological or economic productivity and complexity of rain fed cropland, irrigated cropland, or range, pasture, forest and woodlands.
- **Initiative:** Land degradation mapping - combination information of land cover and land use changes with trends in the vegetation productivity to analyse the likelihood of degrading or improving environments.
- **Results:** Tailored EO processing chains to generate degradation maps based on sub-indicator 15.3.1 corresponding to Land cover & land cover changes, land productivity changes and carbon stock changes, based on the classes: forest land, grassland, cropland, wetlands, settlements & other, to support assessment, planning, implementation, monitoring reporting obligations.

Target 15.3: By 2030, combat desertification, restore degraded land and soil, including land affected by desertification, drought and floods, and strive to achieve a land degradation-neutral world.

Target 13.1: Strengthen resilience and adaptive capacity to climate-related hazards and natural disasters in all countries.



• **Service provider:** GeoVille

References: <https://eo4society.esa.int/projects/eo4sdgs/>
<https://www.eo4idi.eu/>