

GreenSSLM – Forest and area conservation and sustainability management

- **User:** Government Agencies, Public Authorities, NGOs, Research Orgs, Ecosystem Conservation Organizations, Forestry.
- **Challenge/Needs:** Monitoring and understanding land use / land cover change and sustainability is a very challenging task, due to the amount and diversity of all relevant interacting factors acting upon an ecosystem. No innate historical record to help identify man-made or natural changes.
- **Initiative:** A platform that manages a vast variety and quantity of space data in order to calculate a set of parameters indicating the presence of alterations on a given ecosystem's status (biomass, area of change, protected areas, green cover...etc)
- **Results:** A cloud-based interface, satellite and remote sensing monitoring information, output from a combination of multiple algorithmic models, the results of which are analytically studied by environmental experts to deliver solutions which promote conservation and sustainability in areas where human and wildlife co-existence and vegetation growth is of the essence.

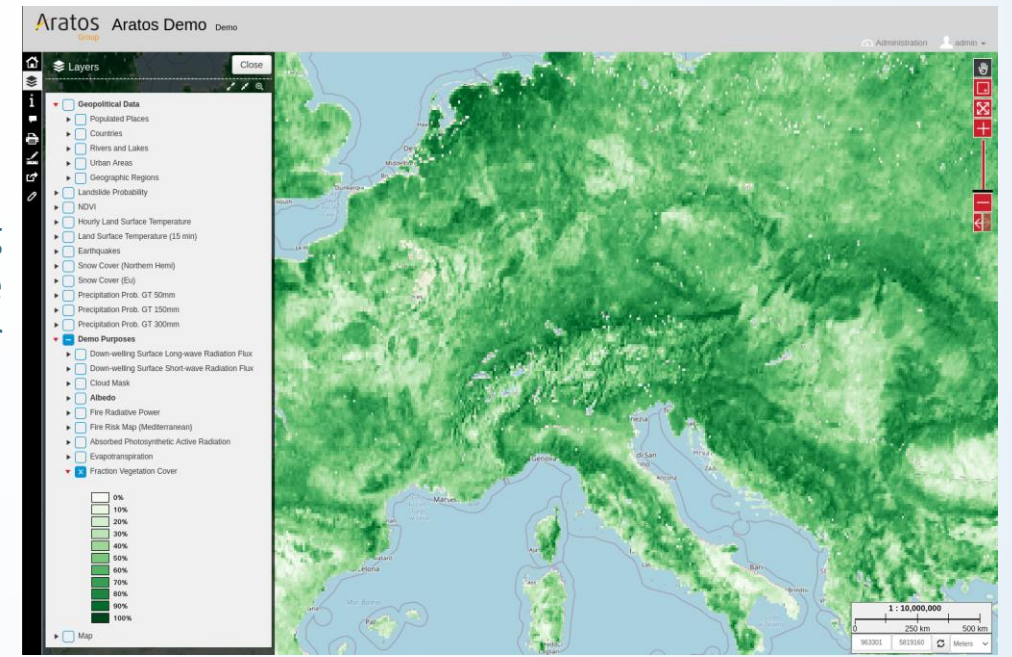
- Target 15.1: By 2020, ensure the conservation, restoration and sustainable use of terrestrial and inland freshwater ecosystems and their services, in particular forests, wetlands, mountains and drylands, in line with obligations under international agreements. Indicator 15.1.1: Forest areas.
- Target 15.2: By 2020, promote the implementation of sustainable management of all types of forests, halt deforestation, restore degraded forests and substantially increase afforestation and reforestation globally. Indicator 15.2.1: Sustainable forest management
- Target 15.4: By 2030, ensure the conservation of mountain ecosystems, including their biodiversity, in order to enhance their capacity to provide benefits that are essential for sustainable development. Indicator 15.4.2: Mountain green cover

Service Provider: Aratos Systems.



European Association of Remote Sensing Companies

<https://www.greensslm.com/>



Fraction of Vegetation Cover corresponds to the fraction of ground covered by green vegetation.