

EO services contributing to SDGs Reality Check

spottitt

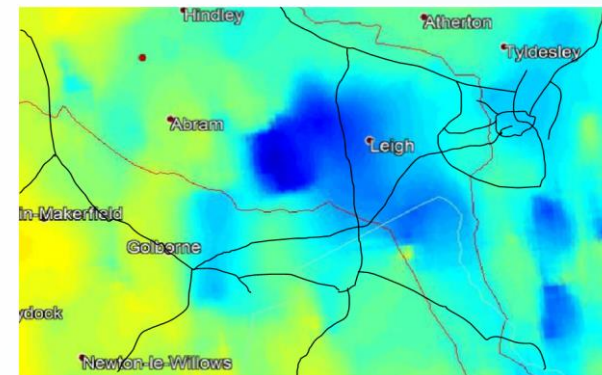
13 CLIMATE ACTION



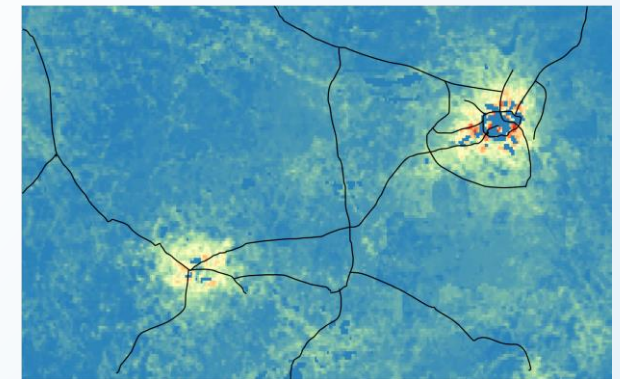
- User: International, national, regional and local government bodies and agencies, NGO's and specific industries.
- Challenge/Needs: Not all locations are exposed to the same climate risks. This service enables customers to understand the current and changing risk posed by flooding, land motion, and a whole host of other climate factors to the integrity of their assets and lives of the local population.
- Initiative: Developed as part of Spottitt's range of services for utility network operators. Clients able to choose the climate factors most relevant for their geography with data going back 10 years or more.
- Results: Commercially available 'Reality Check' service. Global coverage. Cost £120 per 1,000 square km of territory. Volume discounts available.
- Service Provider: Spottitt Ltd.

Target 13.1: Strengthen resilience and adaptive capacity to climate-related hazards and natural disasters in all countries.

- identifying and monitoring climate hazards



Land motion



Soil moisture and flooding frequency

EARSC

European Association
of Remote Sensing
Companies

www.spottitt.com