

# EO services contributing to SDGs

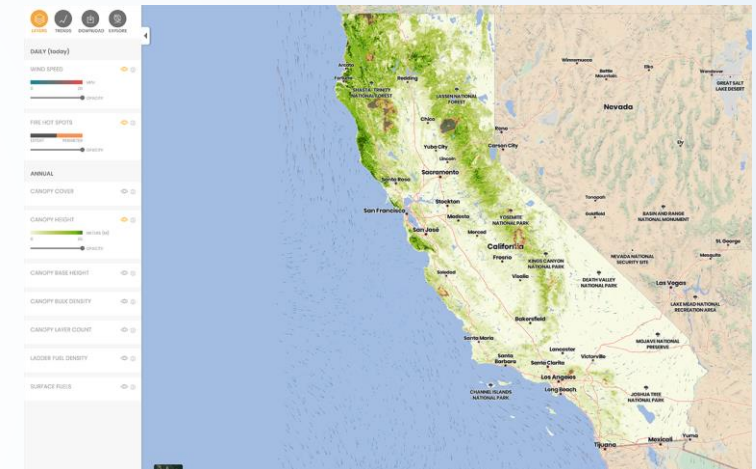
## Mapping California Forests and Wildfire



- **User:** Government, researchers and nonprofits working on forest restoration and wildfire mitigation efforts.
- **Challenge/Needs:** The methods for tracking and mapping wildfires and hazards have been inadequate, offering vegetation fuel maps that are static, low resolution and outdated. Government agencies, first responders, municipalities and other organizations traditionally lack the tools to proactively plan for and build long-term resilience to wildfire.
- **Initiative:** The California Forest Observatory (CFO) is a new data-driven forest monitoring system designed to dynamically map forest structure and vegetation fuel loads at the individual tree level. Powered by a partnership between Planet, Salo Sciences and Vibrant Planet, with support from the Gordon and Betty Moore Foundation, the CFO provides unprecedented and continuously updated views of wildfire hazard and forest health for California.
- **Results:** This wall-to-wall, statewide data sets a new standard for how we research, plan for, and respond to wildfires in California. The tech leverages artificial intelligence, satellite imagery and airborne LiDAR to produce detailed data on vegetation fuels—including tree heights, canopy cover, density and understory ladder fuels. Combining these fuses data with weather and topography to assess wildfire hazards across the landscape.

- **Service Provider:** Planet

**Target 13.1** Strengthen resilience and adaptive capacity to climate-related hazards and natural disasters in all countries



The California Forest Observatory web platform displays trends across space and time. © Salo Sciences, Inc. 2020



**EARSC**

European Association  
of Remote Sensing  
Companies

<https://www.planet.com/pulse/cfo-mapping-new-standard-wildfire>

<https://www.planet.com/pulse/monitoring-wildfire-risk-using-space-and-ai/>