

EO services contributing to SDGs

SAMS: Shoreline Automatic Monitoring System



- Users: Environmental Agencies, Maritime Ports, Public Administrations
- Challenge/Needs: assess and track coastal erosion processes. Coastal erosion is a major disruptor of tourism and real state for Spanish Mediterranean coast, implying high costs in restoration.
- Initiative: Open Innovation in Climate-related Risks. This project aimed at developing EO solutions for tackling issues related to climate change.
- Results: SAMS (Shoreline Automatic Monitoring System). Digital cloud-based system that automatizes the process of shoreline detection in temporal series of satellite images, providing digital maps and statistics. The tool can be used to analyse historical data and infer cause-effect in coastal erosion processes and also as a recurrent monitoring tool.
- Service Provider: Orbital EOS

Target 13.1: Strengthen resilience and adaptive capacity to climate-related hazards and natural disasters in all countries.

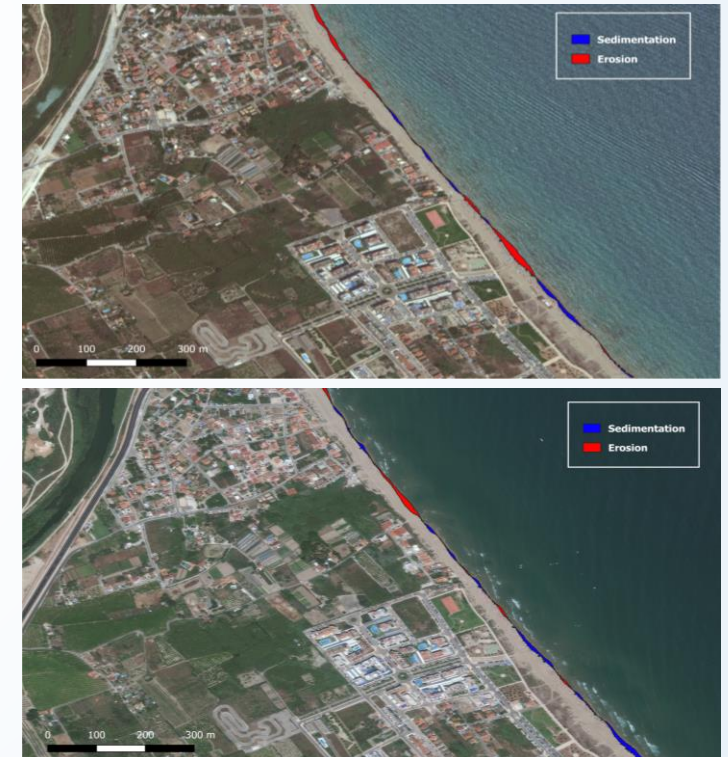


Fig. SAMS analytic results, showing areas of erosion in the coast of Gandia, Spain

