

EO services contributing to SDGs

FIRO: Assessing damages in powerlines

- User: Energy companies, Insurance companies
- Challenge/Needs: Severe storms cause damages in powerlines, something that has to be assessed rapidly to restore electricity. A first assessment is often very costly, and sometimes impossible due to bad weather in remote locations
- Initiative: Innovation in EO, Proof of Concept with Red Eléctrica Española, willing to have a fast, agile and scalable tool for the assessment of damages in powerlines.
- Results: FIRO (Fast Imagery for Response Operations) is a digital AI-based platform that provides VHR SAR satellite imagery in NRT to assess damages in segments of powerlines
- Service Provider: Orbital EOS

Target 13.1: Strengthen resilience and adaptive capacity to climate-related hazards and natural disasters in all countries.

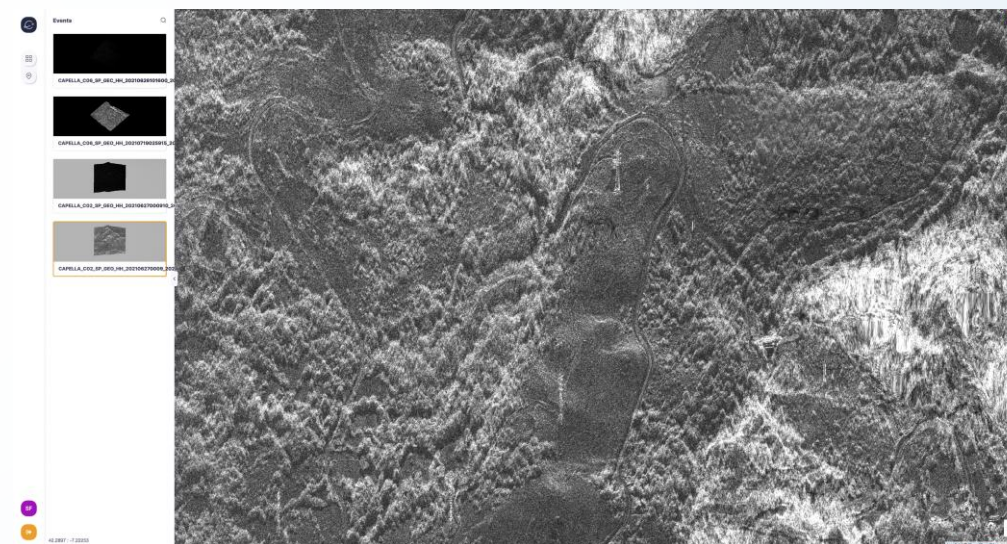


Fig. Digital interface of FIRO, showing pylons of powerlines. © satellite image Capella Space