

EO services contributing to SDGs

Mapping urban heat and green

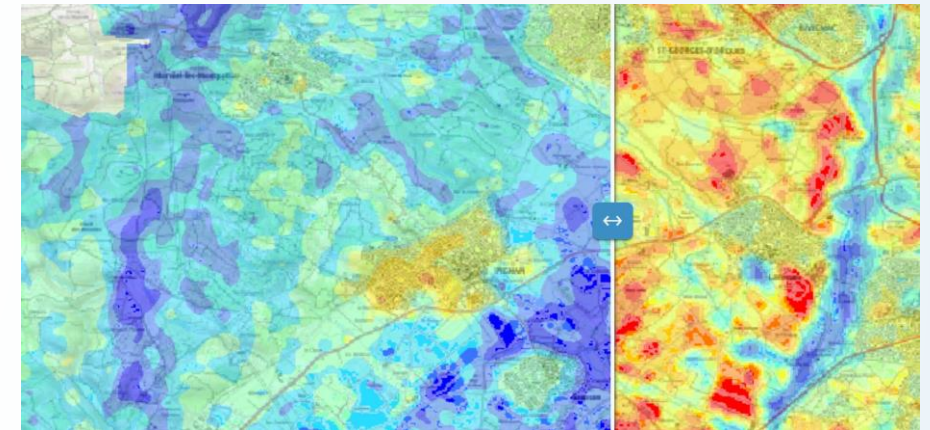


13 CLIMATE ACTION



- User: Greater Montpellier area (Pop. : 480,000)
- Challenge/Needs: Improving knowledge of, and alleviating urban heat island phenomena across the city in the wake of extreme heat events. Resilience and adaptive capacity to climate-related hazards
- Initiative: production and analysis of satellite thermography, climate-oriented land-use mapping and high-detail vegetation mapping over a 400 sq. km. area
- Results: Programmes and incentives towards revegetation and tree plantation, including a municipal plan for an additional 50,000 trees by 2030, aiming at local climate regulation among others ecosystemic services
- Service Provider: Kermap

Target 13.1: Strengthen resilience and adaptive capacity to climate-related hazards and natural disasters in all countries.



Night/day satellite thermography, Greater Montpellier area



High-detail vegetation mapping, Greater Montpellier area