

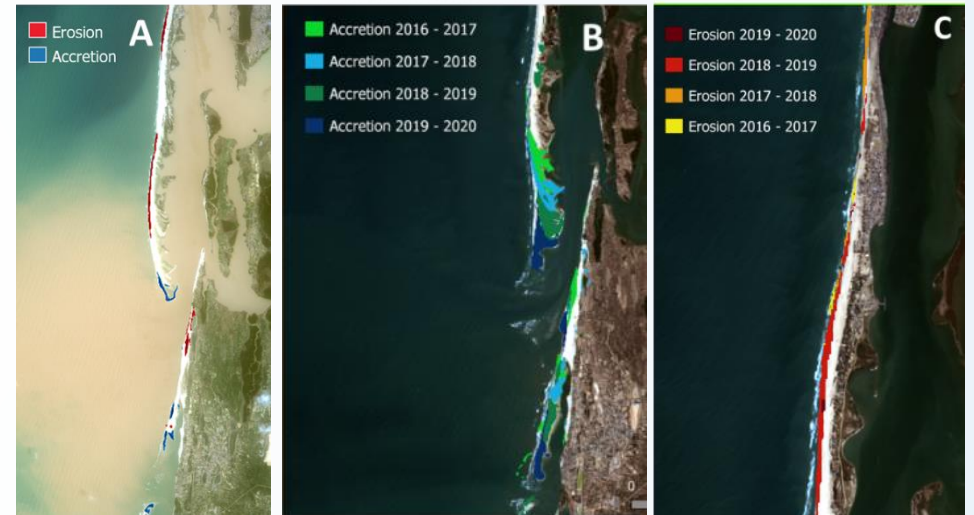
EO services contributing to SDGs

Natural disasters – Monitoring coastal erosion



- User: West Africa Coastal Areas Management Program (WACA), Governmental authorities of the Republic of Maldives (coastal zone management, institutions involved in financial planning of infrastructure projects, the tourism industry and entities involved in early warning and resilience)
- Challenge/Needs:
 - Support long term resilience measures
 - Identification and prioritization of coastal zone management
- Initiative: PrepaCoast (Development under a Kick-start Activity of ESA Business Applications)
- Results:
 - Online tool (powered by Google Earth Engine platform) to map coastal erosion and accretion
 - Impact: Identification of communities and infrastructure at risk. Improved decision-support for coastal protection
- Service Provider: Remote Sensing Solutions GmbH

Target 11.5: By 2030, significantly reduce the number of deaths and the number of people affected and substantially decrease the direct economic losses relative to global gross domestic product caused by disasters, including water-related disasters, with a focus on protecting the poor and people in vulnerable situations.



Example: coastal erosion monitoring tool in Senegal. A) Intra-annual changes, B) annual accretion and C) annual erosion



Example: coastal erosion monitoring tool in the Maldives

EARSC

European Association
of Remote Sensing
Companies



<https://business.esa.int/projects/prepacoast>

