

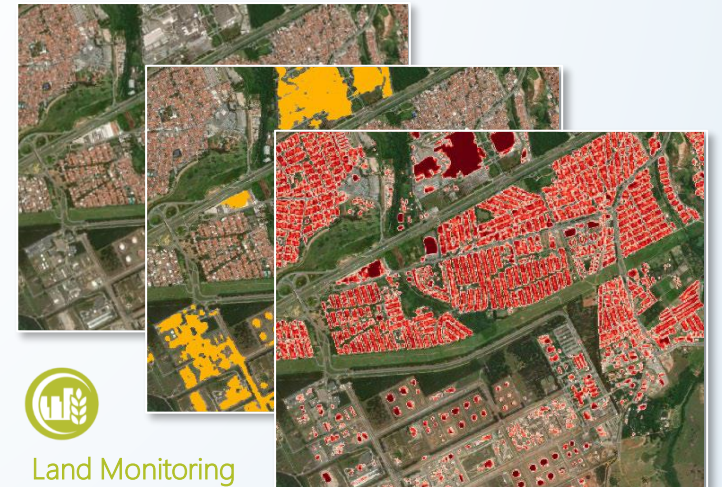
EO Services contributing to the SDGs Urban Monitoring

- **Users:** Public authorities (urban & spatial planning), supranational institutions, NGOs, private sector
- **Challenge:** Safe and Affordable Housing. Monitor & measure development of urban areas, settlements and sealed surfaces, incl. informal settlements
- **Initiative:** Continental scale, high-resolution (10m) mapping of built-up & sealed areas and urban land use characterisation (10m or better)
- **Results:** Globally applicable EO-enabled Copernicus Land Monitoring Service services, for city-rural management and scenario evaluations
- **Service provider:** GeoVille
- **References:** Copernicus Land Monitoring Service – High Resolution Layer for Imperviousness <https://land.copernicus.eu/pan-european/high-resolution-layers/imperviousness>

Target 11.1: By 2030, ensure access for all to adequate, safe and affordable housing and basic services and upgrade slums.



© Urban area monitoring Brazil (Top - Rio de Janeiro; Bottom – Sao Paulo) Copernicus Land Monitoring Service, European Environment Agency; processing by GeoVille



Land Monitoring

