

EO services contributing to the SDGs

TeleCense



Users: State/ region/ city, R&D Institutes and Regulation agencies, Insurers, Design Offices, network Suppliers/ Operators, Governance international institutions

Challenges: major issues in uncontrolled demographic growth and population displacements (emerging countries) / TeleCense accurately assesses building footprints, population distribution. Integrated into the decision-making process, contributes to many applications (climate change, urban planning, health,...)

Initiative: 3 to 4 years of R&D, market access

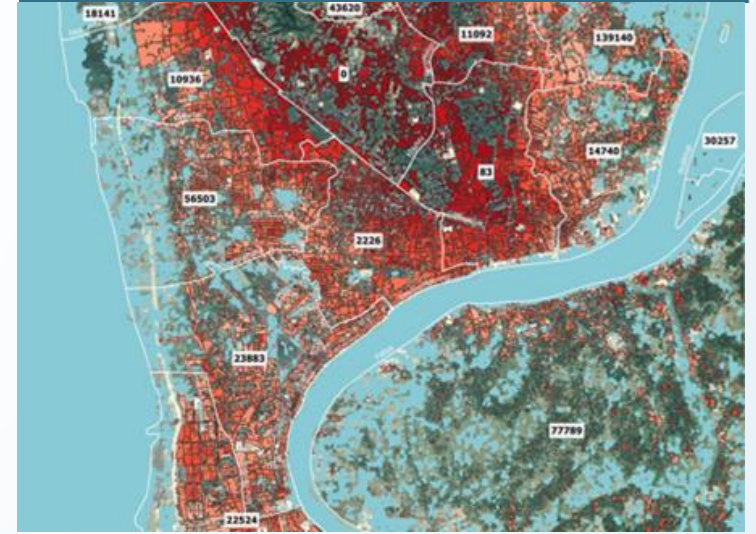
Results: overcomes the lack of censuses, reliable results (Copernicus Sentinel 1 & 2 sources, fusion, extraction models & demographic models) updated every 6 months

Benefits: affordable, homogenous, timely, scalable, replicable and predictive

Service provider: Diginove

- 1/ Axa Mansard [Health]: modelling and preventing the spread of malaria
- 2/ Axa Climate [Climate change]: impact of rising waters on population & infrastructure
- 3/ Egis [Social]: surveys and sampling plans to propose changes in agricultural practices
- 4/ AFD [Transport]: LSTMP Lagos mobility project for the Bus Rapid Transit expansion

- Target 11.1: By 2030, ensure access for all to adequate, safe and affordable housing and basic services and upgrade slums.
- Target 11.3: By 2030, enhance inclusive and sustainable urbanization and capacity for participatory, integrated and sustainable human settlement planning and management in all countries.
- Target 11.7: By 2030, provide universal access to safe, inclusive and accessible, green and public spaces, in particular for women and children, older persons and persons with disabilities
- Target 13.1: Strengthen resilience and adaptive capacity to climate-related hazards and natural disasters in all countries.



TeleCense: Satellite data and demographic expertise to help you take the best decisions. Population growth and displacement in emerging countries is one of the major challenges facing humanity

EARSC

European Association
of Remote Sensing
Companies

References

<https://astriumgeo.maps.arcgis.com/apps/Cascade/index.html?appid=137236e917b44bf78279eb7b3e85b8c2>