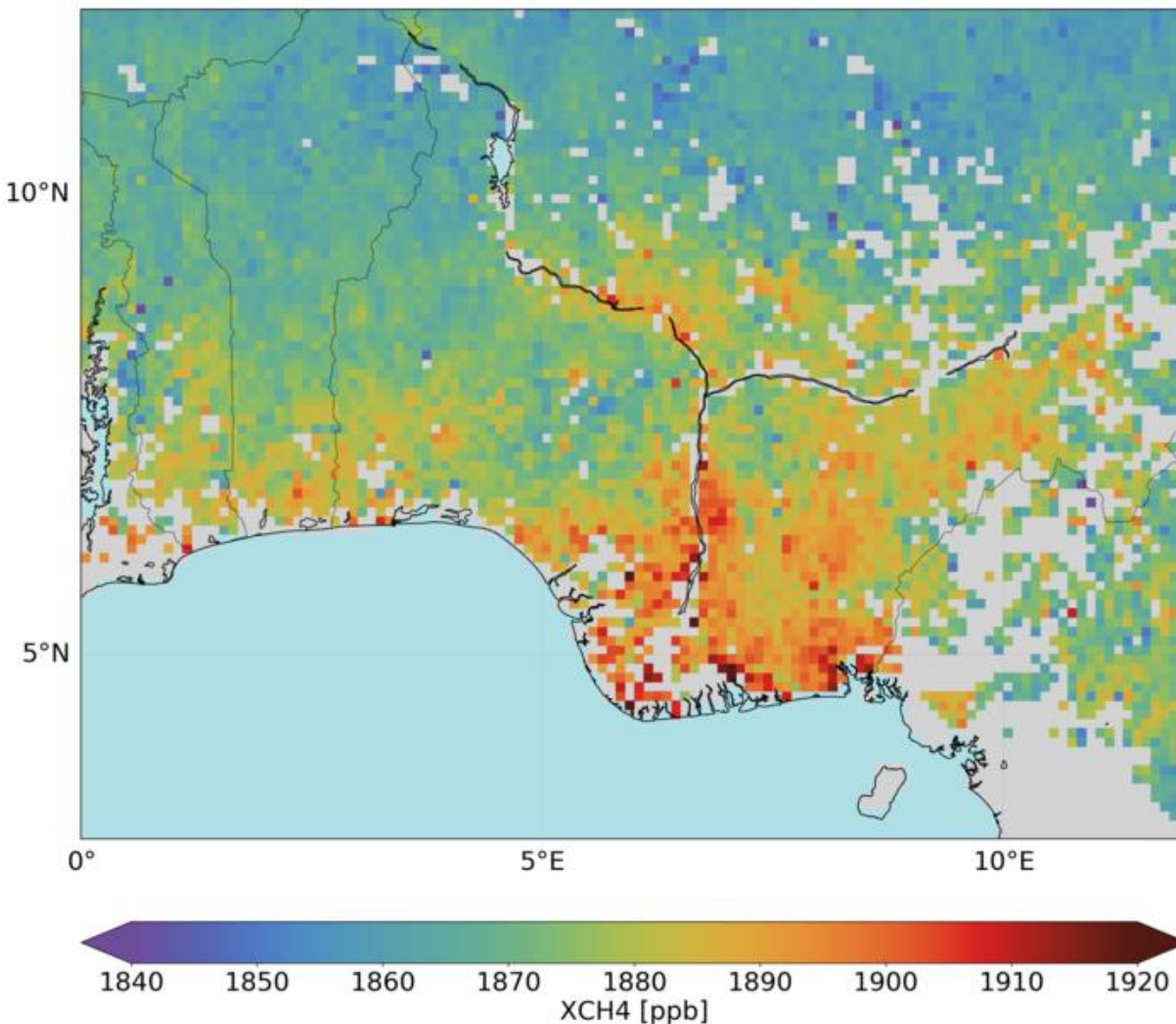


AIR QUALITY CH4



Methane concentrations over wetlands in Nigeria based on Sentinel 5-p data, processed by SRON
(Source: ESA)

PRODUCT DESCRIPTION

Category

- | | |
|--|---|
| <input type="checkbox"/> Topographic information | <input type="checkbox"/> Surface deformation |
| <input type="checkbox"/> Impact assessment | <input type="checkbox"/> Precision ortho-images |
| <input checked="" type="checkbox"/> Change detection / continuous monitoring | <input type="checkbox"/> Terrain information |
| <input type="checkbox"/> Land cover / use | <input type="checkbox"/> Water quantity & quality |
| <input type="checkbox"/> Near surface geology | |

Uses

Environmental Assessment & Permitting – Mining companies need to understand what impact they may have on the air quality around the operation for the people and the environment.

Design, Construction & Operations – Measurement and monitoring of the quantity of different particulates in the atmosphere.

Closure and Aftercare – During closure and aftercare period should be demonstrated that there are no ongoing air emissions from the site and emissions return back to baseline

Challenges addressed

Permitting Process – Air quality

Development and Operations – Environmental Monitoring

Closure and Aftercare – Environmental Monitoring

Geo-information needs

P-6 Ambient Air Quality / Particulate Fallout

DO-24 Monitoring air emissions – point source

DO-25 Monitoring air emissions - fugitive

CA-7 Demonstration of return to baseline air quality – including deposition

Description

Atmospheric methane (CH₄) is the second-most abundant anthropogenic greenhouse gas (GHG) after CO₂. During shale gas field development, unexpected emissions of methane and other light gases can occur. Knowledge of background and industrial emissions helps to meet emissions guidelines.

Satellite EO-based quantification of methane in the troposphere is a relatively new area of research (operational methods use airborne hyperspectral systems, such as: MAMAP, AVIRIS-ng, HyTES, and CARVE). Several EO sensors have been tested. The SCIAMACHY instrument on board the ENVISAT satellite acquired CH₄ monitoring data for seven years, and was a ground-breaking technology development platform. The sensor estimated total CH₄ quantity of the at-nadir atmospheric column through modelling based on direct measurements of short-wave infrared (SWIR) radiation. Overall, the research reveals limitations in methane retrievals and deviations from validation data, as well as the relatively coarse spatial resolution of the observations (individual SCIAMACHY pixels are 30 km x 60 km, while some derived models average the data to a regular 1° longitude x 1° latitude grid).

The newer, operational TANSO Fourier Transform Spectrometer (FTS) sensor on board the Japanese Greenhouse Gases Observing SATellite (GOSAT) is dedicated to greenhouse gas monitoring. TANSO-FTS operates in the shortwave infrared (SWIR) and thermal infrared (TIR) regions of the electromagnetic spectrum. Shortwave infrared measurements allow for the retrieval of CH₄ column concentrations with high sensitivity near the Earth's surface.

In 2015, a novel instrument has been launched aboard the GHGSat nanosatellite (operating in the shortwave infrared region). It has unprecedented spatial resolution (tens of meters) and sensitivity equal to or better than any existing or previous SWIR satellite instruments. Using a novel observational paradigm, the GHGSat instrument retrieves both total CH₄ values (through depth of atmosphere columns) and local emission rates for identifiable CH₄ emission sources. GHGSat also measures CO₂ emissions.

The Sentinel-5 precursor/TROPOMI satellite was launched in 2017 and delivers observations on a

daily time step. It is called precursor because it fills the gap until Sentinel 5 on MetOp-SG-A will be launched in 2020.

In 2021 a new EO system dedicated to methane monitoring will be launched. The Methane Remote LiDAR Mission (MERLIN) Integrated Path Differential Absorption (IPDA) LiDAR will measure total-column CH₄ with high accuracy, and represents a new approach to atmospheric monitoring – MERLIN will be a micro-satellite launched into a polar orbit by DLR and CNES. Mission planners expect CH₄ concentration measurements at better than 2% error, even under cloudy or variable illumination conditions. In contrast to existing passive remote sensors, measurements in polar regions will be possible and biases due to aerosol layers and thin ice clouds will be minimised. Further, the LiDAR instrument will allow retrieval of methane fluxes in all seasons and at night time.

Methane emissions can be attributed to different sources (e.g., livestock, oil and gas, and mining) and are also dependent on land cover type, and are particularly affected by wetlands. Wetland extent and land use information can be used to improve the accuracy of methane emission maps. The methane emissions monitoring product can currently deliver archived and operational regional scale methane estimates (raster image values) along with summary statistics. Significant short-term improvements in accuracy are expected due to the scheduled launch of new sensors and the development of new operational analytical methods.

Known restrictions / limitations

EO estimates of CH₄ from SCIAMACHY (satellite decommissioned in 2012) yield small differences between minimum and maximum values, complicating analysis efforts. Further, estimation error magnitude is similar to the variability in the greenhouse gas mixing ratio being measured.

Spatial resolution of methane retrievals from satellite-based EO are currently relatively coarse – native resolution of sensors is around 10 km (GOSAT) to 30 km (SCIAMACHY) or more. Models may average the data to a regular 1° longitude × 1° latitude grid.

and MERLIN, should provide improved retrievals. Short wave infrared (SWIR) measurements from GHGSat will be in the tens of metres. The novel LiDAR system on the MERLIN satellite will be dedicated to CH₄ monitoring and will provide data with 50 km resolution. Both systems will measure CH₄ abundance with an accuracy of about 1-2%.

Lifecycle stage and demand

Exploration	Environmental Assessment & Permitting	Design, Construction & Operations	Mine Closure & Aftercare
■	■■■■	■■	■■

Environmental Assessment & Permitting: Mining companies need to understand what impact they may have on the air quality around the operation and what impact this air quality might have on people and the environment. As part of the permitting process it is necessarily to establish what the baseline is, and to demonstrate that this will not be materially affected when mining operations are underway and when the mine is closed and rehabilitated. Sampling will be required over a wide area and will typically be governed by dispersion modelling. A 10 km² area may be taken as typical for monitoring of ambient air for a mid-size mining operation. Within this 10 km² area in the order of 10 to 20 sampling points may be established. There are very many different parameters of interest in relation to the

atmosphere. From an impact perspective; the key parameters will be Particulate and oxides of carbon, nitrogen and sulphur (CO_x, NO_x and SO_x). Individual metal parameters within the air column can also be determined. The amount of particulate that falls out on to the ground can be measured on a per m² basis (typically 'X' mg/ m²/day). Minimum levels of detection can be taken from 'Technische Anleitung zur Reinhaltung der Luft', which is a comprehensive document issued by the German government, which describes air quality standards. This document, commonly referred to as the 'TA Luft', is used by many countries and organisations as a reference for air quality.

Design, Construction & Operations: Mining operations will have point source air emissions from ventilations shafts, processing plants, labs, power plants etc. Measuring the quantity of different parameters emitted into the atmosphere (gaseous and solid) is an important aspect for mining companies to manage their potential environmental impact. Typical parameters are CO_x, NO_x, SO_x, Particulate, H₂S. The area required to be assessed will be dependent on the footprint of the mining operation and could be 1 km² to 10 km². Air emissions can result in transboundary impacts on air quality beyond the site boundary. The extent of transboundary impact depends on the nature of the emission and also prevailing weather conditions and geographic features. Given the mobility of air emissions, an area of hundreds of km² may need to be monitored. Air emissions will take place on a continuous basis. Many air emissions will be stable and infrequent measurement of monthly to quarterly will be sufficient. Other emissions will be more variable and subject to disruption, these would ideally be measured on a continuous basis. In addition to point source air emissions, mines will have significant fugitive air emissions, these can be plumes from pit blasts, dust from vehicular movement, dust blow off TSF / WRD, and fires. Monitoring for fugitive emissions is an important aspect for mining companies to manage their potential environmental impact. This fugitive monitoring can also be used to identify sources of emission and implement corrective actions (including identifying spontaneous combustion fires and arrange to have these extinguished). The frequency required for monitoring this parameter is site specific. In many instances monthly would be sufficient but in particular for the identification of spontaneous combustion continuous monitoring would be of benefit

Mine Closure & Aftercare: Monitoring will be required during the closure and aftercare period to demonstrate that there are no ongoing air emissions from the site that could cause an impact. Point sources will no longer be operational. The focus will be on fugitive emissions from WRD's and TSF's. Assessment of this parameter will involve field work including measurement of air quality for various parameters and measurement of particulate fallout. Depending on climatic conditions air emissions can travel long distances. The area to assessed can be hundreds of km². Monthly data is sufficient, this can be used to calculate daily deposition rates

Geographic coverage

Coverage is global

EARSC Thematic Domain

Domain	<i>Atmosphere and Climate</i>
Sub-domain	<i>Atmosphere</i>
Product description	<i>Monitor Air Quality and Emissions</i>

PRODUCT SPECIFICATIONS

Input data sources

Satellite	<i>MetOp/IASI</i>	<i>TROPOMI/Senti nel 5-p</i>	<i>GHGSat</i>	<i>GOSAT</i>	<i>Merlin</i>
Status	Operational	Operational	Operational	Operational	Future
Operator	EUMETSAT	ESA	GHGSAT	JAXA	CNES/DLR
Data availability	Public	Public	Commercial	Public	n/a
Resolution (m)	100 km	7x7 km	50 m	1 km	50 km
Coverage	Global	Global	Target anywhere globally	Global	Global
Frequency (days)	29 days	Daily	n/a	3 days	28 days
Launch year	2006 (MetOp-A) and 2012 (MetOp-B)	2017	2016	2009	2021
Website	link	link	link	link	link

Minimum Mapping Unit (MMU)

n/a (the product is directly based on the input data; the smallest unit is 1 pixel).

Accuracy / constraints

Thematic accuracy:

Atmosphere– Monitor Air Quality and Emissions. 80%

For the mining industry the targeted nano-satellites probably are the most suitable source of information, because emissions from water plumes can be very low. Probably the emissions caused by mining activities won't cross the threshold in background values of the larger satellites.

Spatial accuracy: See above. Needed accuracy in the mining sector is often for large areas in relatively high spatial resolution.

Accuracy assessment approach & quality control measures

This is done by field validation using in-situ measurements.

Timeliness

n/a

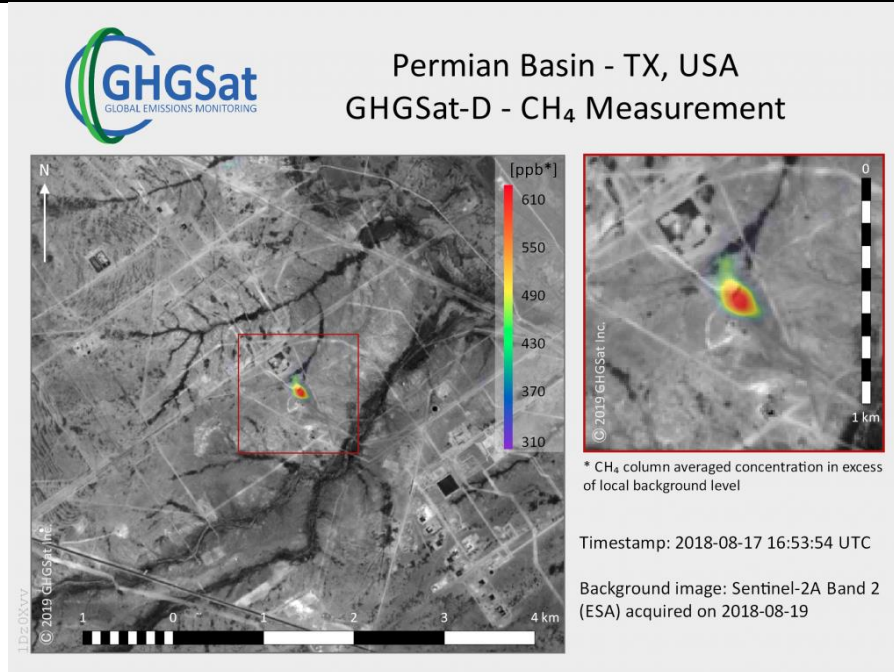
Availability

Data is typically freely available for non-commercial use through the open data policy of the different space agencies. See for an overview of the used satellites the table above.

Delivery / output format

Typically, the datasets are delivered in HDF5, NetCDF, binary or in shapefiles.

Use Case



Source: GHGSat

This image was taken in In August 2018, by GHGSat's demonstration satellite Claire, over two years after her launch in June 2016. GHGSat detected emissions of methane, an important greenhouse gas, from an oil & gas facility in the Permian Basin. (Source: www.ghgsat.com)

Author(s): Margreet van Marle, [Author 2]
Document Title: Air Quality CH4
of Pages: 5
Circulation: Internal – Project consortium and industry partners
 External – ESA

REVISION LOG

(to be filled out by authors/reviewers/word processors)

Revision				Description
Number	Date	Revised By	Approved By	
Version 0.1	August 19, 2019	Margreet van Marle		Provision of first Word version
Version 0.2	September 24, 2019	Margreet van Marle		Provision of revised Word version