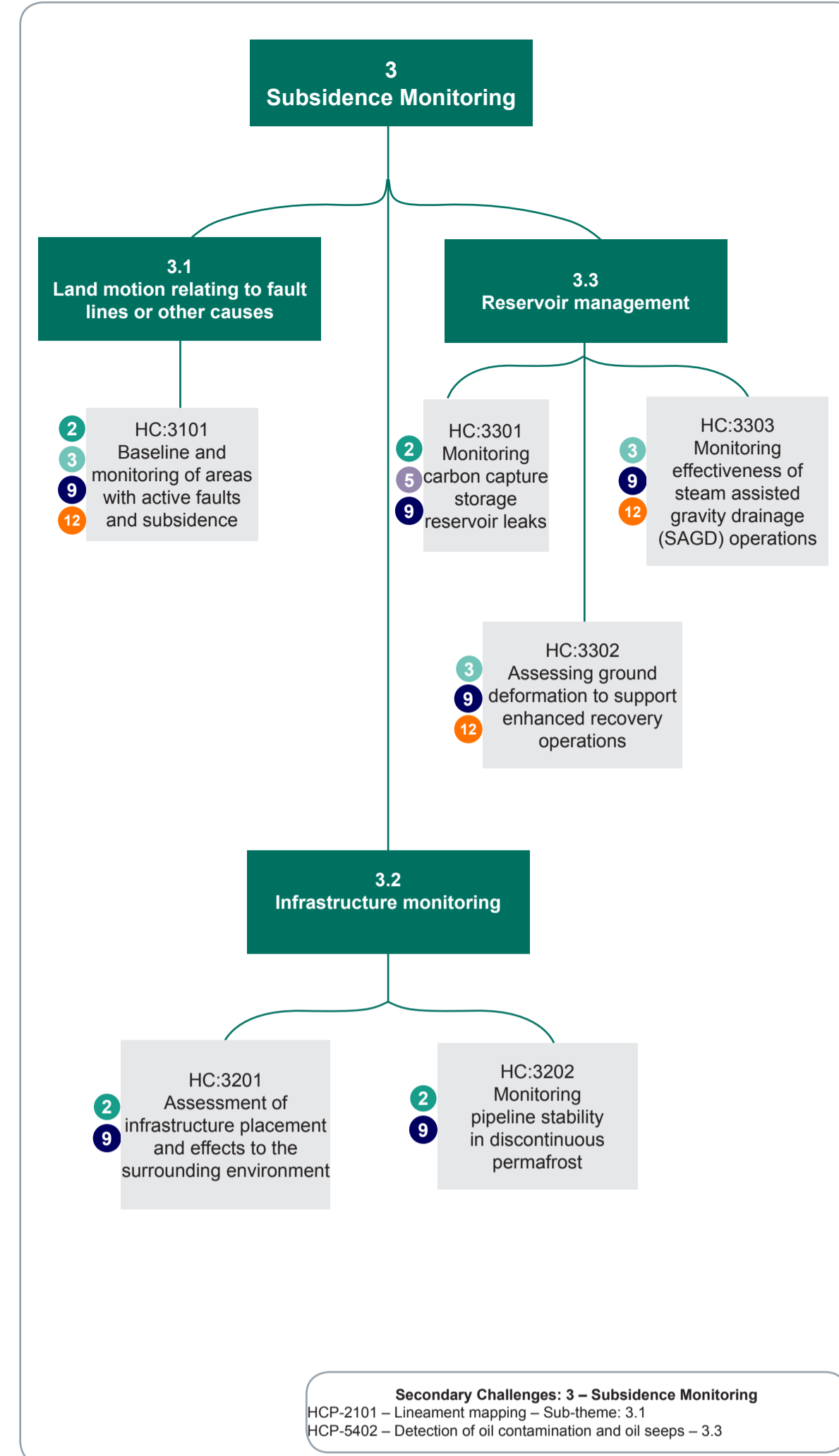
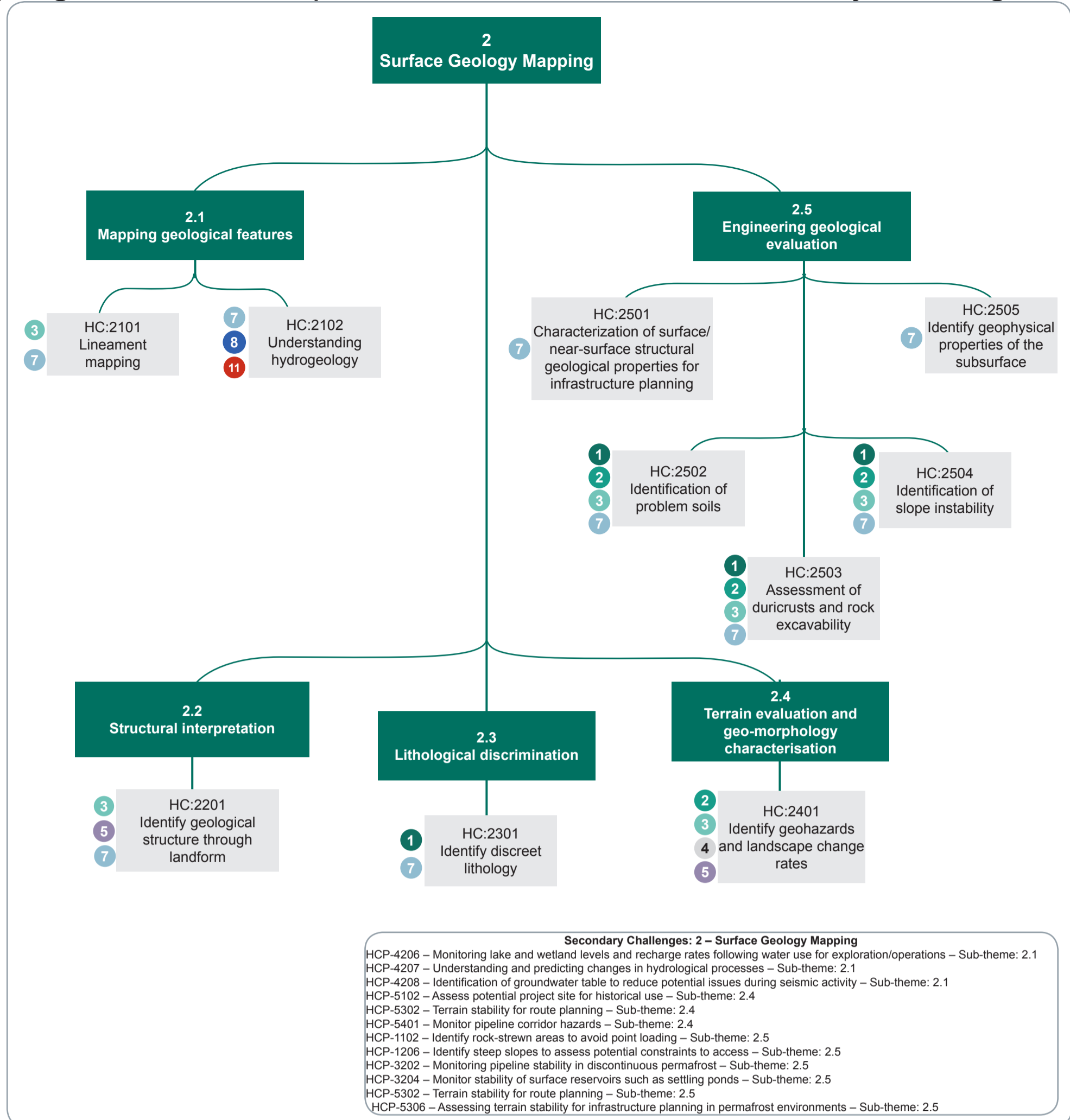
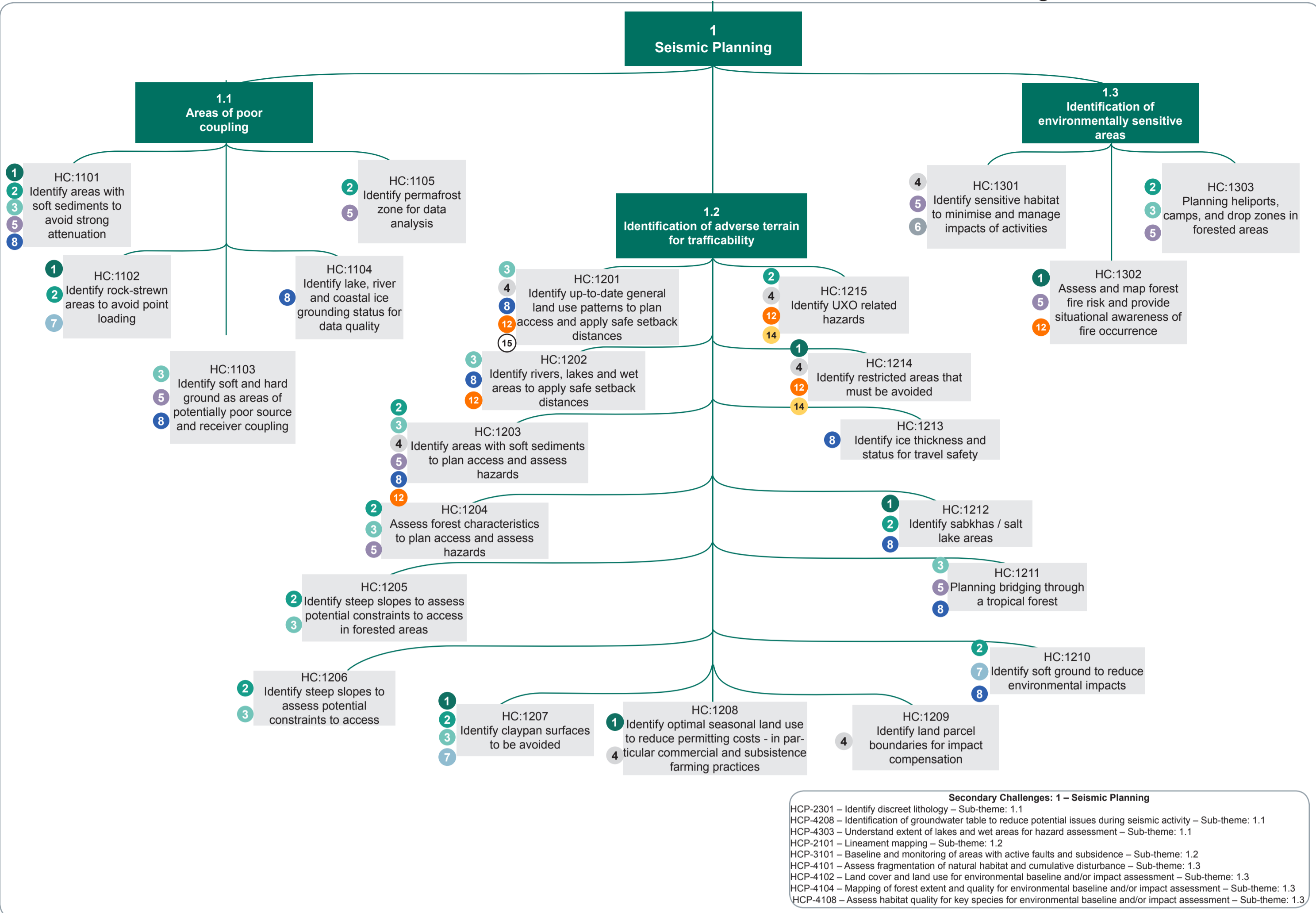


# Hatfield Consultants EO4OG Challenge Trees - A thematically organised visual representation of Oil and Gas Industry challenges



- Geo-information requirements to meet industry challenges**
- Precision ortho-images
  - Terrain information
  - Topographic information
  - Detailed land use information
  - Detailed land cover information (information about vegetation and fauna)
  - Critical habitat identification
  - Lithology, geology and structural properties of the near surface
  - Water quantity identification (Lakes, streams, and wet areas)
  - Surface and ground motion (horizontal and vertical)
  - Air quality and emissions
  - Water quality identification (river and lakes)
  - Distribution and status of infrastructure
  - Distribution and status of assets
  - UXO hazard identification
  - Sub-surface features and covered infrastructure

