

# EO services contributing to SDGs

## MRV for commodities (Sustainable management of agroforestry systems)

gmv NSL

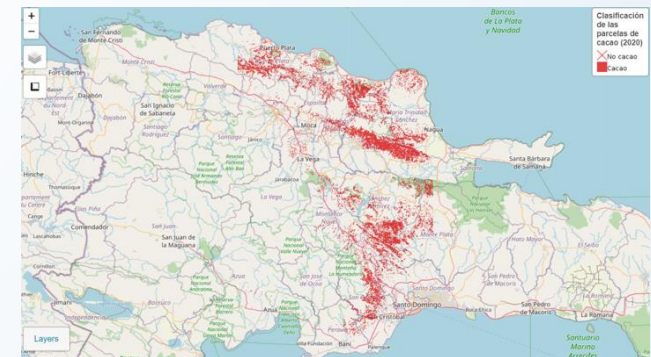
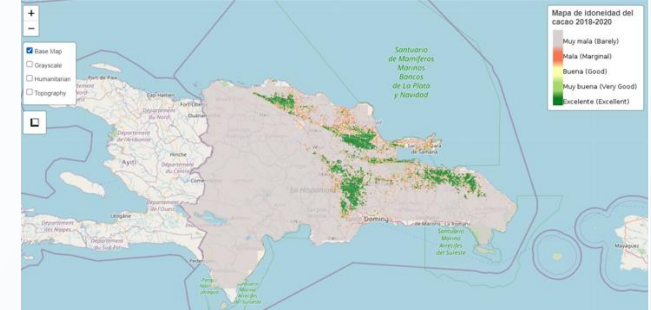


- **User:** Dominican Republic (DR) Ministry of Environment and Natural Resources, Ministry of Agriculture (Cocoa Dept.), DR Cocoa Foundation (producers assoc.) and National Cocoa Commission.
- **Challenge/Needs:**
  - Boost the value chain of sustainable organic cocoa, certify a zero-deforestation cocoa value-chain
  - Support Measurement, Reporting and Verification (MRV) strategy in the country. Plan the cocoa production strategy and Certify a cocoa value chain without deforestation.
  - Contribute to demonstrate the role of cocoa in fighting climate change.
  - Support decision-making to modernize cocoa value chain and attract investors.
- **Initiative:** Cocoa is an opportunity to boost economy a reduce the high poverty rates in the DR, the world leader producer of organic cocoa. Need to identified the most suitable land for cocoa cultivation; mapped present cocoa farms and conclude on their role in reducing CO<sub>2</sub> emissions (MRV4C).
- **Results:** GMV set up an MRV system, and as part of it, identified the most suitable land to grow cocoa (without losing sight of the natural protected areas); monitored one-year forest loss and drought, in particular, around the current cocoa farms; generated a ML classification of cocoa farms and estimated Above ground Biomass.
- Service Provider: GMV NSL (<https://gmv.com/en-es/sectors/space>)

Target 2.4: By 2030, ensure sustainable food production systems and implement resilient agricultural practices that increase productivity and production, that help maintain ecosystems, that strengthen capacity for adaptation to climate change, extreme weather, drought, flooding and other disasters and that progressively improve land and soil quality.

Target 8.2: Achieve higher levels of productivity of economies through diversification, technological upgrading and innovation, including through a focus on high value added and labor-intensive sectors

Land suitability for cocoa growing based on agroecological and climatic parameters (above) and Cocoa Farms classification(below).



EARSC

European Association  
of Remote Sensing  
Companies

