

EO services contributing to SDGs

Loss of Green Space Analysis

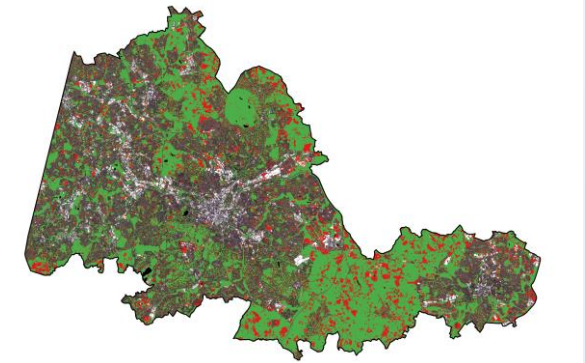


- User: International, national, regional and local government bodies and agencies, NGO's.
- Challenge/Needs: Large scale analysis and digital mapping at 10m down to sub meter resolution of loss of green infrastructure between two dates.
- Initiative: Developed as part of Spottitt's range of environmental services.
- Results: Commercially available service derived from a range of different sources of optical imagery with 10m down to 50cm resolution. Global coverage. Cost £0.50/square km excluding imagery cost. Volume discounts available.
- Service Provider: Spottitt Ltd.

- Target 1.2: By 2030, reduce at least by half the proportion of men, women and children of all ages living in poverty in all its dimensions according to national definitions.
 - Target 1.2 Mapping areas and resources
- Target 1.3: implement nationally appropriate social protection systems and measures for all, including floors, and by 2030 achieve substantial coverage of the poor and the vulnerable
 - Target 1.3 Mapping access to basic facilities



Spottitt 10m loss of green space analysis Oxfordshire



Spottitt 50cm resolution loss of green space analysis West Midlands Combined Authority