

# EO services contributing to SDGs

## 10m resolution Habitat Classification (Land Cover Analysis)

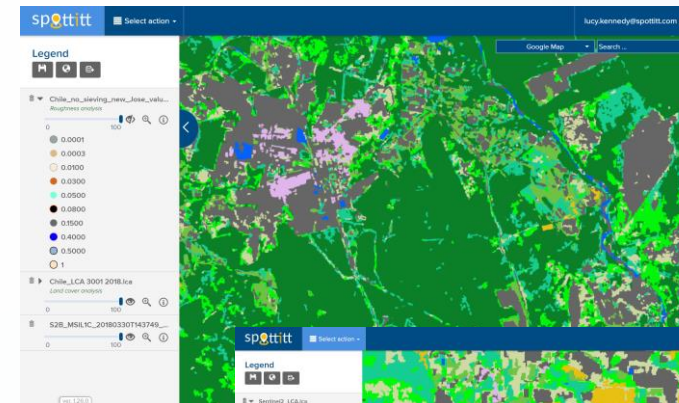


1 NO POVERTY



- User: International, national, regional and local government bodies and agencies, NGO's and specific industries.
- Challenge/Needs: Large scale analysis and digital mapping of current and past habitats from 64 square km and upwards in size. Used to map areas and resources plus access to basic facilities and see how these have changed over time.
- Initiative: Developed as part of ESA Business Applications funded SEWISS project which developed a range of site selection tools for onshore wind developers.
- Results: Commercially available service derived from Sentinel 2 imagery. Global coverage. Automated service request/delivery. Cost £1/square km. Volume discounts available.
- Service Provider: Spottitt Ltd.

- Target 1.1: By 2030, eradicate extreme poverty for all people everywhere, currently measured as people living on less than \$1.25 a day.
  - Mapping areas and resources
- Target 1.3: implement nationally appropriate social protection systems and measures for all, including floors, and by 2030 achieve substantial coverage of the poor and the vulnerable
  - Mapping access to basic facilities



Spottitt 10m resolution habitat classification Chile



Spottitt 10m resolution habitat classification Thailand

EARSC

European Association of Remote Sensing Companies

<https://www.spottitt.com/about/spottitt-features/land-cover-analysis-lca/>