

EO services contributing to SDGs

Vulnerability maps



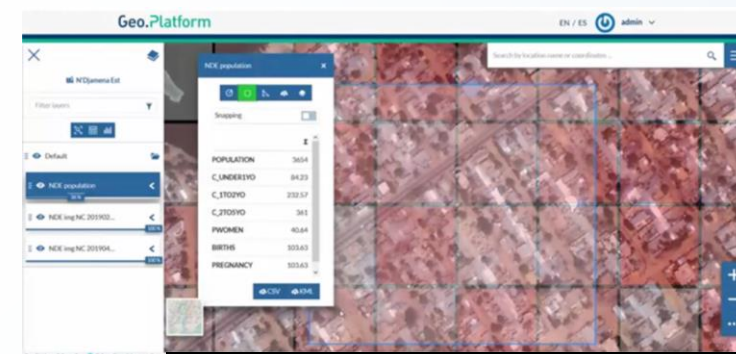
- User: ONU agencies, Governments, NGOs.
- Challenge/Needs: updated information on the vulnerable population for food, health, education, infrastructure, etc. programs.
- Initiative: Develop and validated with UNICEF Global. Generation and periodic update of a Geo-spatially located population estimates grid for areas where official population information is not available, accurate, or updated. The grid cell size is 100x100m. The nature of the information generated is tabular and includes location, demographic parameters (total population, target population disaggregated according to needs) and geospatial covariates (i.e. distance to market, land cover, etc).
- Results: Vaccine / health campaigns optimization. Food programs optimization. Scalable and replicable to other countries.
- Service Provider: SPACESUR

Target 1.1: By 2030, eradicate extreme poverty for all people everywhere, currently measured as people living on less than \$1.25 a day.

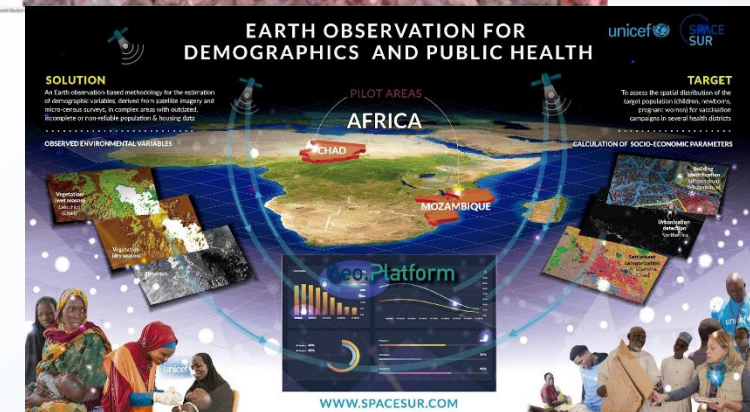
Target 1.2: By 2030, reduce at least by half the proportion of men, women and children of all ages living in poverty in all its dimensions according to national definitions.

Target 1.4: By 2030, ensure that all men and women, in particular the poor and the vulnerable, have equal rights to economic resources, as well as access to basic services, ownership and control over land and other forms of property, inheritance, natural resources, appropriate new technology and financial services, including microfinance.

Target 1.5: By 2030, build the resilience of the poor and those in vulnerable situations and reduce their exposure and vulnerability to climate-related extreme events and other economic, social and environmental shocks and disasters.



Geo-spatially located population estimates grid



How the solution works