

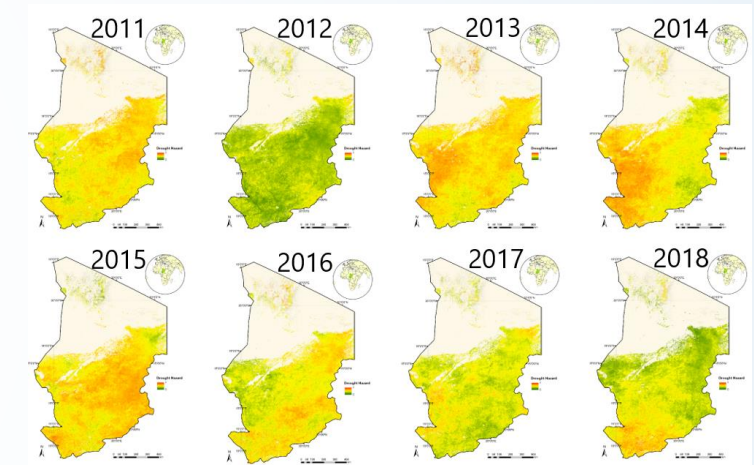
# EO services contributing to SDGs

## Characterizing Drought Risk and Impact

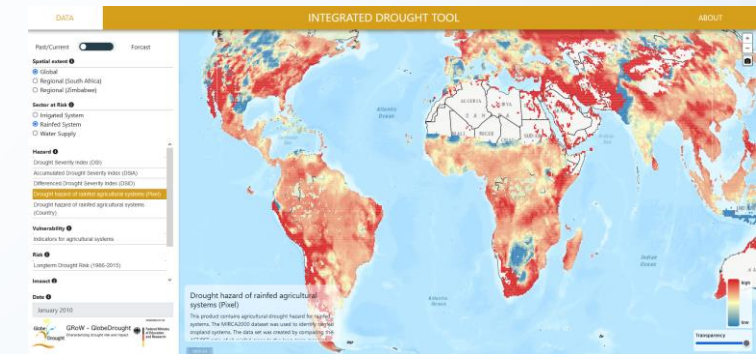


- User: Welthungerhilfe (largest private aid organisation in Germany)
- Challenge/Needs:
  - Global identification of drought hazard, exposure and risk
- Initiative: Global Resource Water (GRoW) which is part of FONA - Research for Sustainable Development (German Federal Ministry of Education and Research)
- Results:
  - Development of a drought probability model that can be transferred globally
  - Spatially explicit description of drought risks by considering three components: drought hazard, exposure and vulnerability
  - Web-based information system for comprehensively characterizing drought events and crop related information products such as farming systems (rainfed vs. irrigated agriculture)
  - Impact: Early identification of the need for international food aid
- Service Provider: Remote Sensing Solutions GmbH

Target 1.5: By 2030, build the resilience of the poor and those in vulnerable situations and reduce their exposure and vulnerability to climate-related extreme events and other economic, social and environmental shocks and disasters.



Yearly drought hazard for the Republic of Chad



The integrated drought tool and portal